

Reduced to the best.

prime  
cube®

Customized Computer Systems

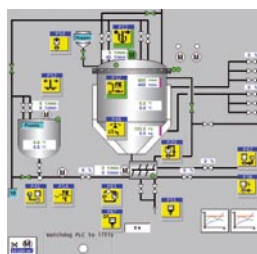


Visualize and Control  
Solutions for Process Automation

# The best Industry Solution.

The combination of performance and reliability with the requirements of hygienic design – this is our know-how when it comes to designing solutions for the process industry. The high-quality individual IPC and embedded systems are based on modular components and integrate specific features for use under hygienic conditions. If required, all solutions are designed to meet GMP requirements. Each device is adapted flexibly and precisely to your demand.

No matter how complex your requirements are, the best solution for your application makes everything easier: from long-term available systems for highest planning and investment security to special surface finishing for optimum cleanability and the performance-optimized embedded operating system. Prime Cube is the brand for demanding enterprises trusting in German engineering and the most efficient solution. Reduced to the best.



## Special Features:

### ■ Hygienic Design

We develop all systems under strict observation of the hygienic requirements for use in the food and pharmaceutical industries, e.g. surface finishing, use of non-harmful materials, integration of authentication systems, design of the surfaces and bends without dirt-collecting edges.

### ■ Customized Computer Systems

From high-performance IPC to performance-optimized embedded systems and remote operator stations: Our industry solutions perfectly match your requirements, e.g. in terms of processor performance, housing material, protection classes or interface specifications. They are based on an innovative modular system which is extended by the functions needed.

### ■ Software All Inclusive

All industrial computers and embedded systems are supplied with operating systems according to your specifications. You can choose from different standard and embedded operating systems. On request PLC and SCADA software is pre-installed and executable. We administer and regularly update your individual software image for embedded and standard operating systems.

# The best Performance Modules.



---

## Hygienic Design and Surface Finishing

- Seamless, GMP-compliant front plate sealing as well as design for hygienic surfaces without beads and edges
- Hygienic surface refinement of stainless steel housings and front plates for optimum cleanability
- ☑ Quick, efficient cleaning of the surface
- ☑ Improved optics and reduced consumption of cleaning agents



---

## Integration of Control Elements and Further Functions

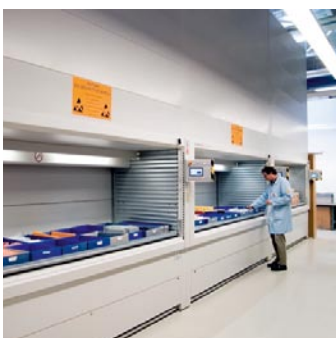
- Additional control elements, e.g. buttons, switches, emergency-off
- Further functions, e.g. RFID-reader, GMP-touchpad
- GMP-compliant keyboards for convenient formulation input and management
- ☑ Quick start-up without further installation work
- ☑ User authentication and ergonomic operation



---

## System Design largely without Fan and without Rotating Parts

- Completely fanless CPU-cooling
- Use of CompactFlash media and solid state drives (SSD)
- Use of power supply units with particularly high efficiency
- ☑ Lowest power loss and heat generation possible
- ☑ Maintenance-free
- ☑ Reduced default risk of mechanical parts subject to wear



---

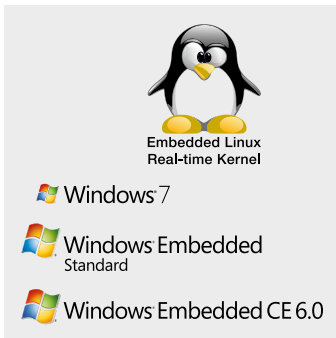
## Optimization of Delivery Times

- For example by safety stock as contracted or defined component stock
- Installation of a consignment store
- Optimized benchmark manufacturing
- ☑ Supply security in the case of fluctuations in demand
- ☑ Quick response times

# The best Software Packages.

For over 30 years we have been realizing customer-specific projects for different industries. Our know-how includes whatever is possible with current software and component-based operating systems. Apart from the customer-specific hardware solution we precisely adapt all software packages to the computer platform and application. The complete software configuration stands out by optimized total performance, functional compatibility and user-friendliness. The system installation facilitates the start-up as much as possible.

We also simplify the management of your storage medium image which we archive and regularly update when necessary.



---

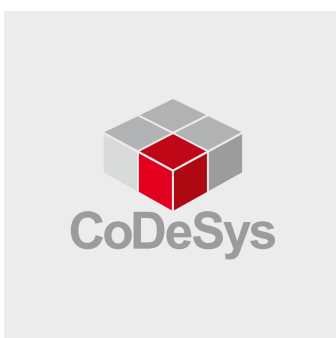
Standard operating systems such as Windows 7 or XP cover all applications. Our embedded operating systems are performance-optimized for precisely defined applications, e.g. as control systems or embedded clients.

The embedded operating systems are based on Windows Embedded Standard (previously Windows XP Embedded), Windows Embedded CE or Embedded Linux with real-time kernel.



---

Our SCADA-solution SPL is also performance-optimized and tailored to the hardware, disposing of specific features which match your projecting specifications or applications, e.g. formulation management, batch traceability, further integration of FDA-regulations (21 CFR part 11), comprehensive event and alarm messages as well as automated e-mails or SMS-messages to the service personnel.



---

CoDeSys V3 is an established standard soft-PLC which is widely accepted on the market. All systems are prepared for use of the hardware-independent IEC 61131-3 runtime. In combination with our embedded control platform you receive a PC-based real-time control. With dual core CPU, virtualization and two operating systems it operates fully independent of the visualization application.

# Examples of Industry Solutions.



## Operator Station

- Stand-alone Panel PC with GMP-front made of stainless steel, hygienic surface refinement
- Long-term available singleboard computer with Intel Atom CPU
- Fanless cooling
- Extended temperature range up to +50° C
- Display 38.1 cm (15")
- Touchscreen
- 2x Ethernet, both real-time capable
- Windows Embedded Standard



## Operator Panel

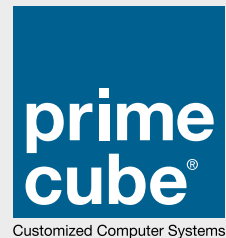
- Panel for control desk installation
- Long-term available embedded system
- Fanless cooling
- IP65-protected stainless steel front
- Extended temperature range up to +50° C
- High-resolution display 21.3 cm (8.4")
- Data logging via serial interface
- Ethernet
- Windows XP Embedded



## Control Computer

- Real-time control with integrated SCADA-software (acc. 21 CFR part 11)
- Long-term available embedded system
- Fanless cooling
- Dual core CPU with hypervisor: Linux with real-time kernel and Windows Embedded
- 2x CompactFlash, 3x Ethernet, 2 of them real-time capable
- CAN-interface, I/O-extension
- Powerfail-recognition and MRAM

# Reduced to the best.



[www.primecube.de](http://www.primecube.de)

Edition 07/10

© MSC Tuttlingen GmbH. All rights reserved. All data are non-binding and do not represent guaranteed data. We do not assume liability for printing errors. Subject to change without notice. The company names and company logos are mostly – even without special identification – protected by copyright and trademark. All product names used are trade names and/or trademarks of the respective manufacturer.



**MSC Microcomputers Systems Components Tuttlingen GmbH**

Rudolf-Diesel-Str. 17 ■ 78532 Tuttlingen ■ Germany ■ Tel. +49 7461 925-200 ■ [sales@msc-tuttlingen.de](mailto:sales@msc-tuttlingen.de)